

Vietnam plant: Lot 12, N11 Road, Dat Do I Industrial Zone, Phuoc Long Tho Ward, Dat Do District, Ba Ria Vung Tau Province

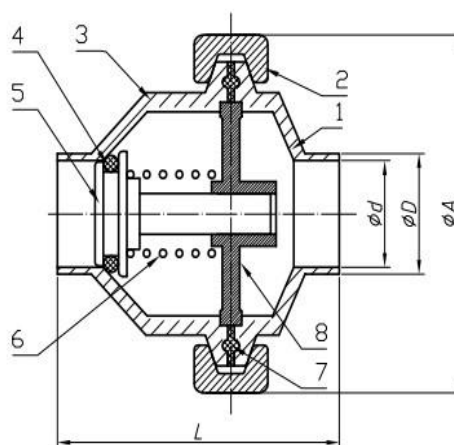
Head office: No.33 Jiuhe East Road, Development Zone, Cangzhou, Hebei, China 061000

Casting&Forging Plant: No.26 Shigang Road, Development Zone, Cangzhou, Hebei, China 061000

Http://www.con-well.com E-mail: con-well@vip.163.com; sale@con-well.com

## Sanitary Check Valves

## DIN standard



### Sanitary Check Valves, DIN standard (mm)

SIZE	d	D	L±2.0	A±2.0
DN25	25.0	28.0	65.0	75.0
DN32	31.0	34.0	68.0	88.0
DN40	37.0	40.0	68.0	88.0
DN50	49.0	52.0	84.0	104.0
DN65	66.0	70.0	99.0	118.0
DN80	81.0	85.0	113.0	145.0
DN100	100.0	104.0	123.0	163.0

### MATERIAL LIST

ITEM	DESCRIPTION	MATERIAL
1	Valve body-small	304/316/316L
2	Clamp	304
3	Valve body-big	304/316/316L
4	O ring	Silion(red)
5	stem	304/316/316L
6	Spring	304/316
7	Seal	Silion(white)
8	Valve accessory	304/316/316L

#### FEATURES:

- Working pressure: 1.0MPa
- Opening pressure: 0.5Mpa
- Working temperature: -10°C to 150°C.